

bios architecture

# 1. HOTELS - RESORTS

HOTEL 'BLUE LAGOON VILLAGE' → 2009-2011  
KOS ISLAND

5 \*\*\*\*\* hotel

Capacity: 228 rooms

Buildings area: 14.230 sq. m.

- A : Central building
- B : Central 'Plaza' – village
- Γ : Waterfront rooms
- Δ : Adults area
- E : Spa building
- Z : Gym
- H : Aqua Park
- Θ : Theatre
- K : Suites
- Λ : VIP - Restaurant
- M : Entrance































































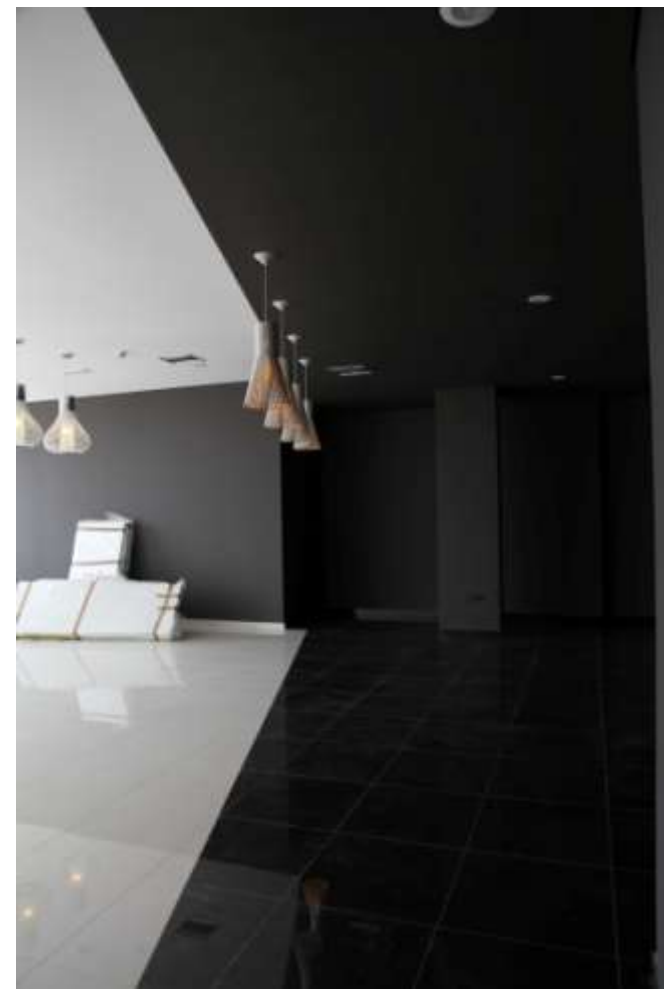
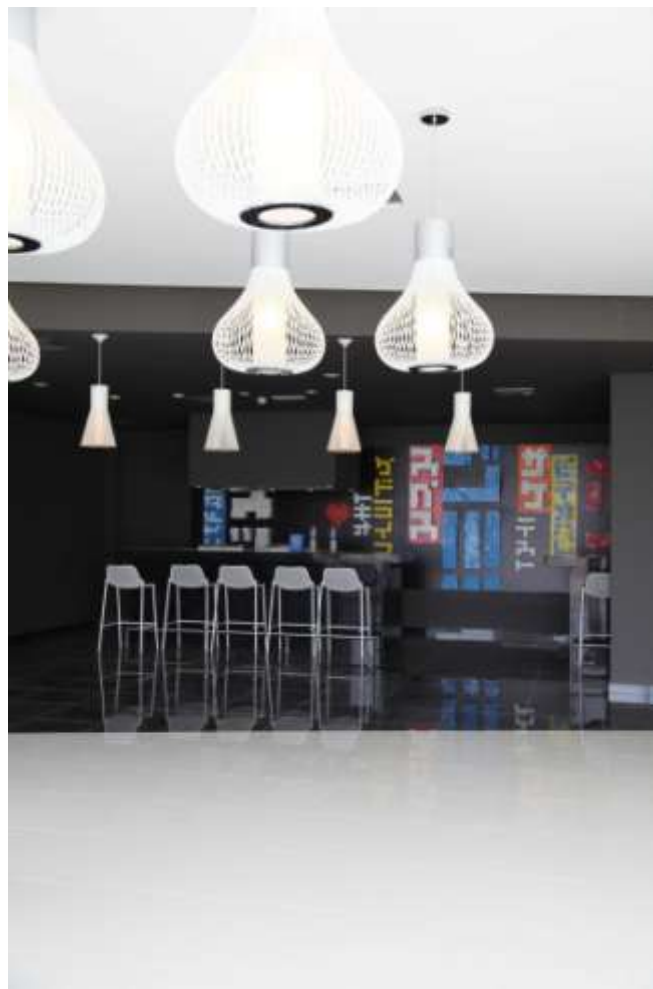




















HOTEL 'BLUE LAGOON RESORT' → 2006-2007  
KOS ISLAND

5 \*\*\*\*\* hotel

Capacity: 550 rooms

Buildings area: 35.320 sq. m.





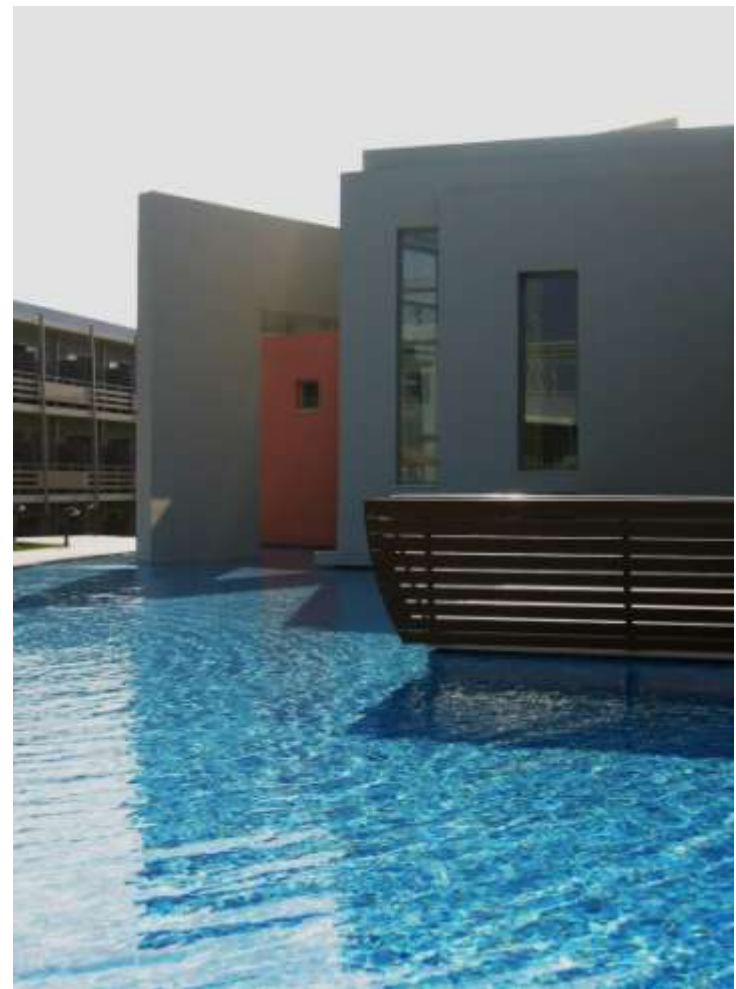






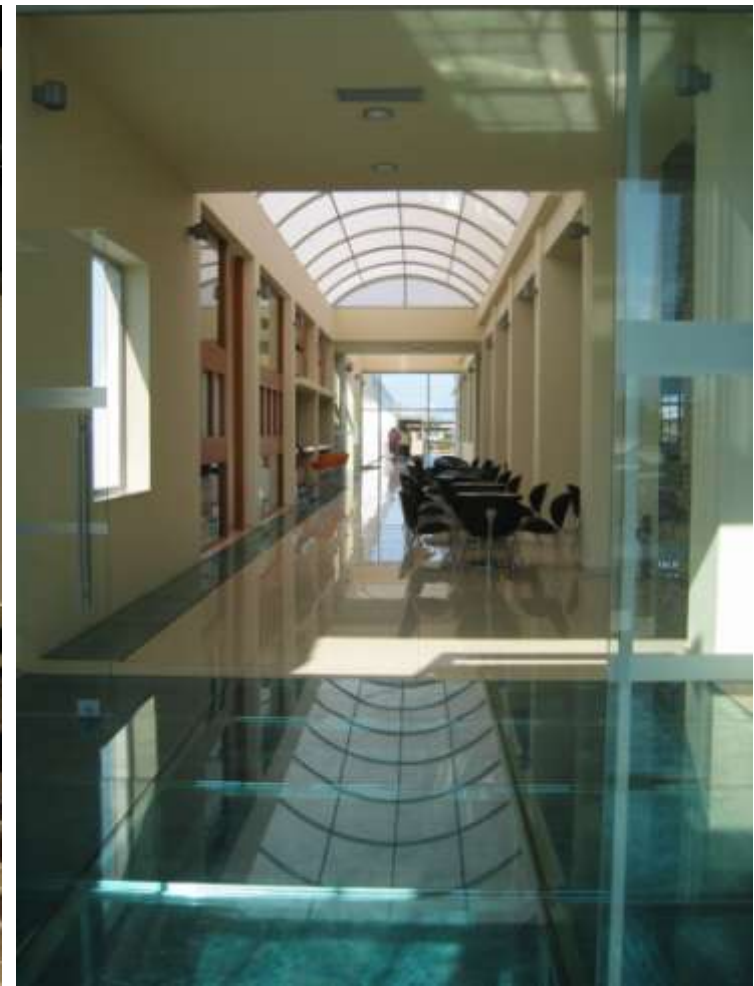












HOTEL 'SENTIDO MICHELANGELO' → 2007-2008  
KOS ISLAND

5 \*\*\*\*\* hotel

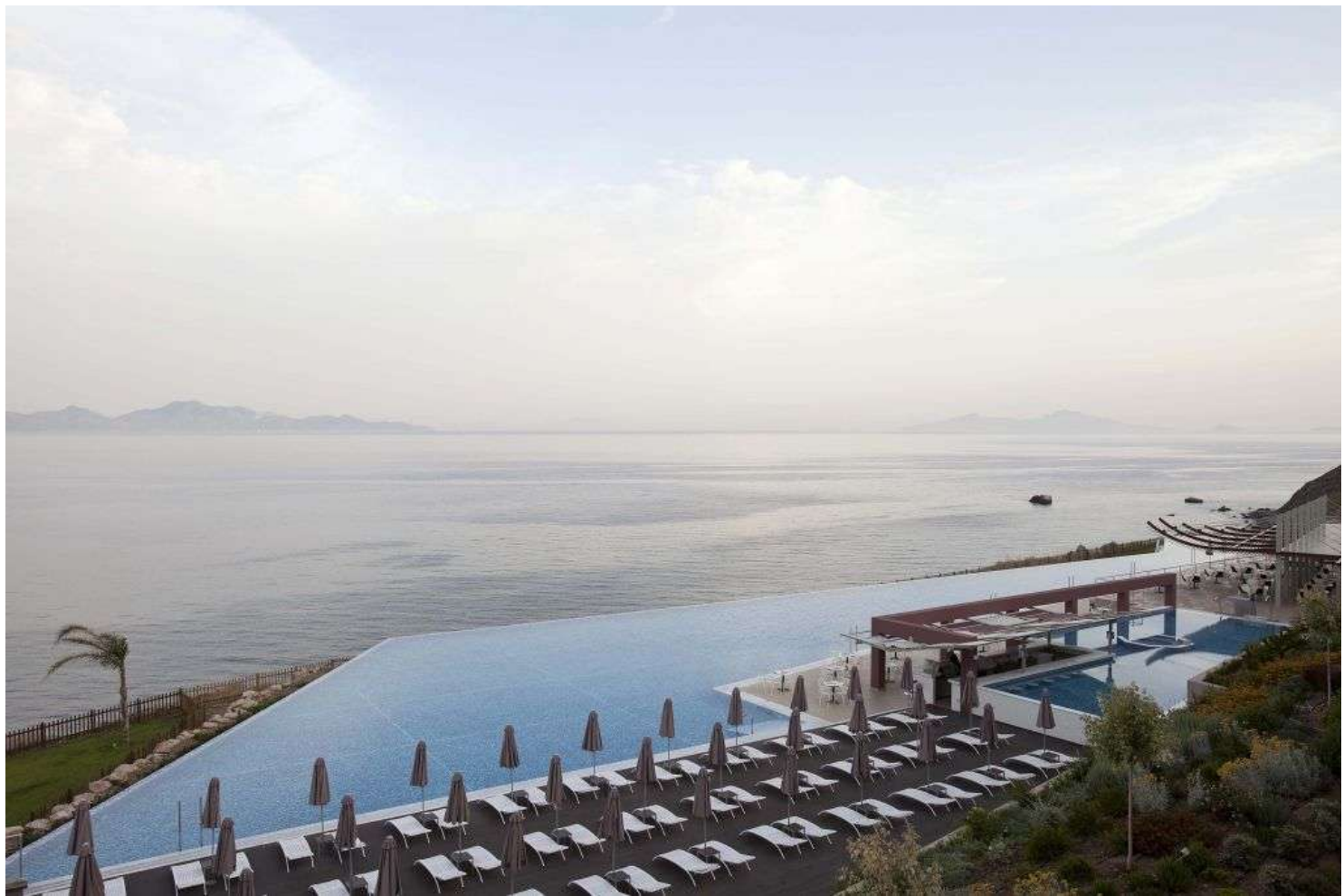
Capacity: 180 rooms

Buildings area: 7.200 sq. m.























HOTEL 'IDEAL BEACH' → 2010  
KOS ISLAND

5 \*\*\*\*\* hotel

Capacity: 109 rooms

Buildings area: 7.120 sq. m.

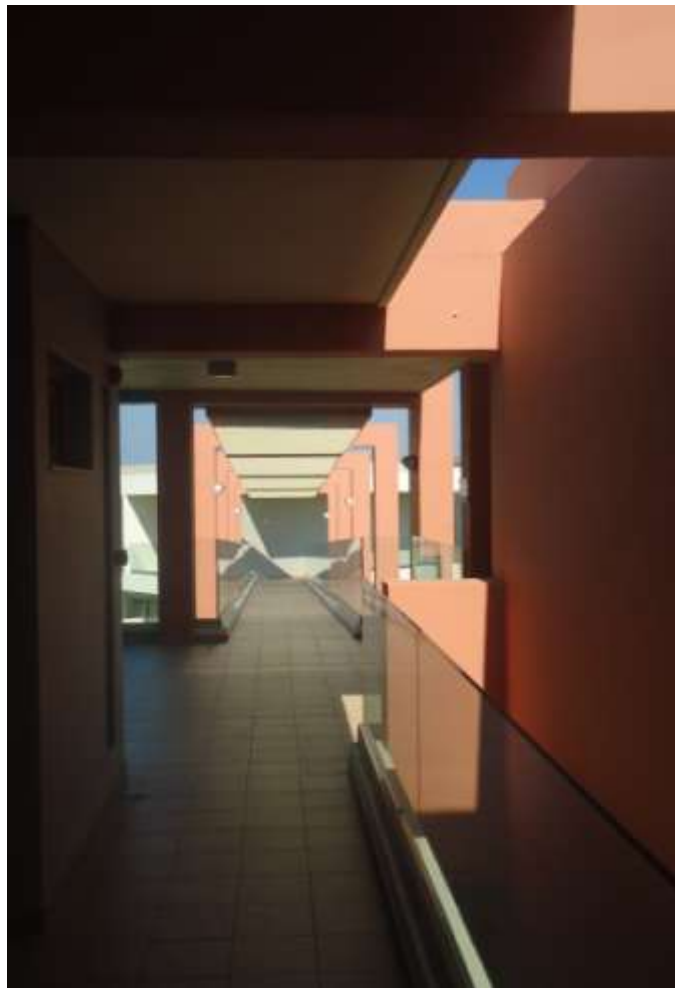












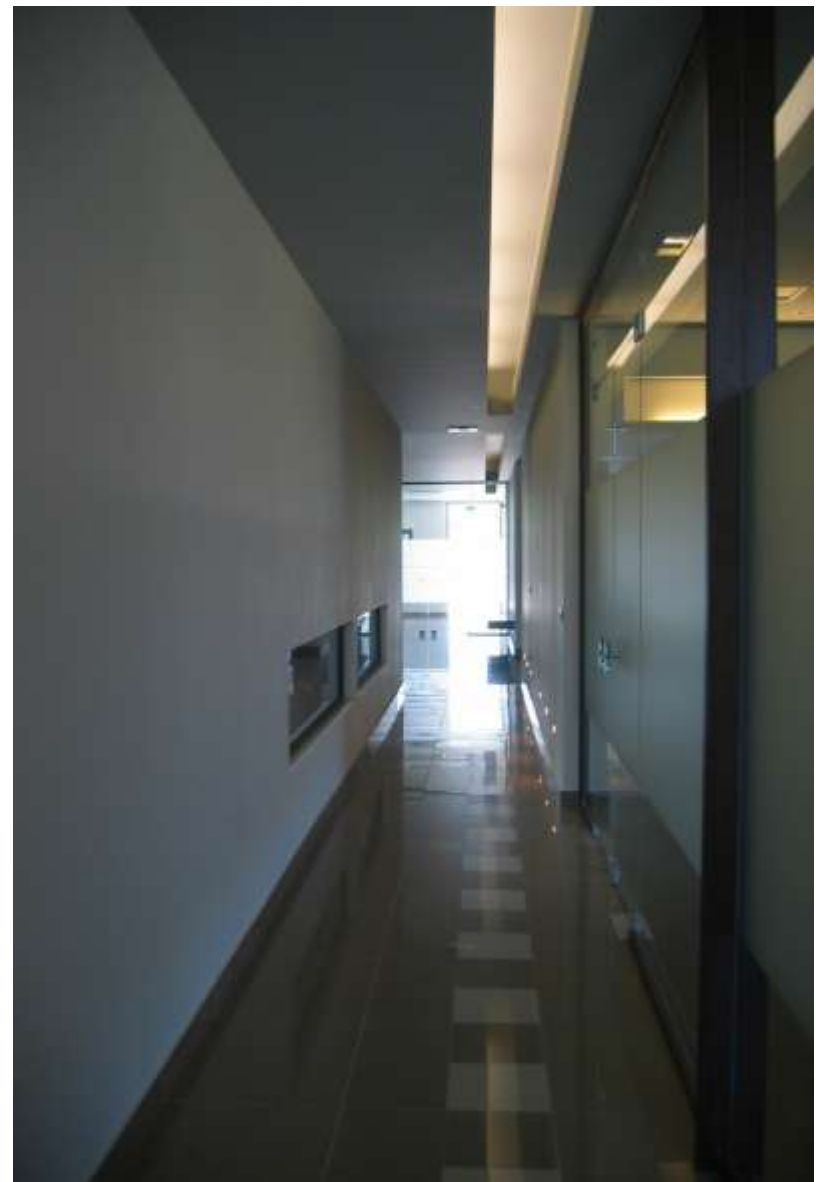
SPA FACILITIES IN BLUE LAGOON RESORT → 2007  
KOS ISLAND

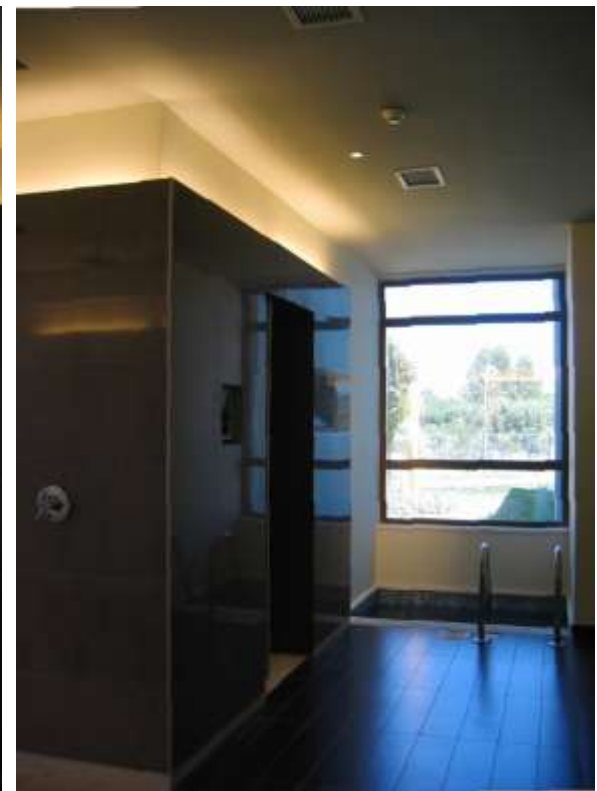












SPA FACILITIES IN BLUE LAGOON VILLAGE → 2012  
KOS ISLAND





















HOTELS – RESORTS - VILLAS IN NAOUSA→ 2001-2003  
PAROS ISLAND

































HOTELS – RESORTS - VILLA IN ISTERNI → 2007– 2009  
PAROS ISLAND









5\*\*\*\*\* HOTEL→ 2013 – project in progress  
CHALKIDIKI





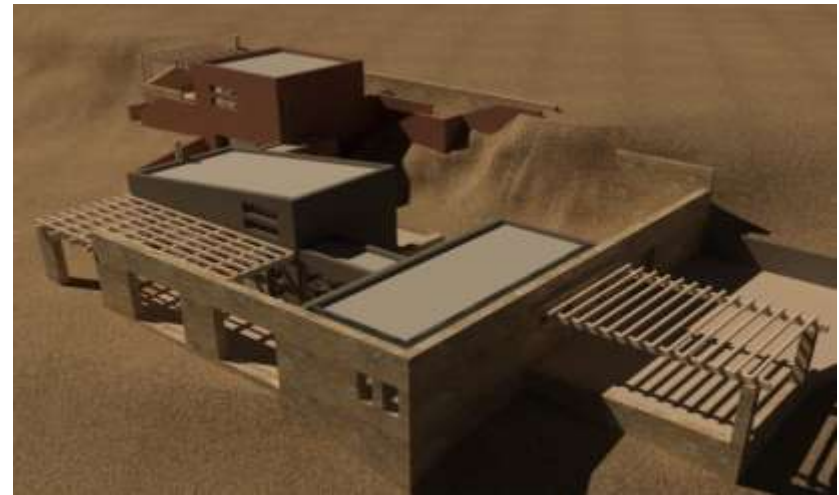






HOTELS – RESORTS - VILLAS → 2011- study in progress  
KOS ISLAND







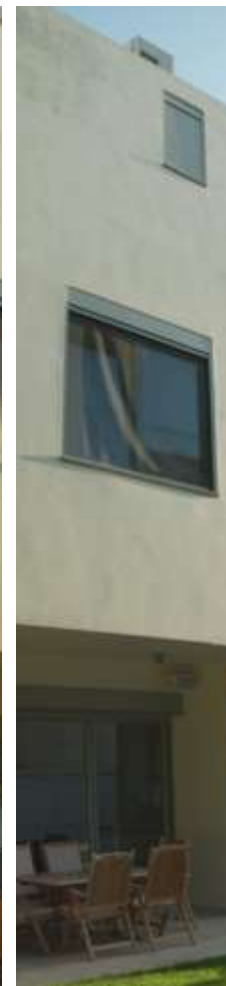




## 2. *RESIDENCES*

### 2.1. *URBAN*

PRIVATE HOUSE → 2007-2008  
GLYFADA - ATHENS











*PRIVATE HOUSE IN THRAKOMAKEDONES→ 2012*  
*ATHENS*





## 2. *RESIDENCES*

### 2.2. *VERNACULAR*



PRIVATE HOUSE IN PELIO → 2011  
GREECE













*PRIVATE HOUSE WITH WORKSHOP → 2011  
ANDROS ISLAND*





*PRIVATE HOUSE WITH SHOPS IN THE GROUND FLOOR → 2008-2009*  
*KOS ISLAND*









### 3. *INTERIOR DESIGN*

RENOVATION AND REFURBISHMENT OF AN APPARTMENT IN FILOTHEI → 2012  
ATHENS



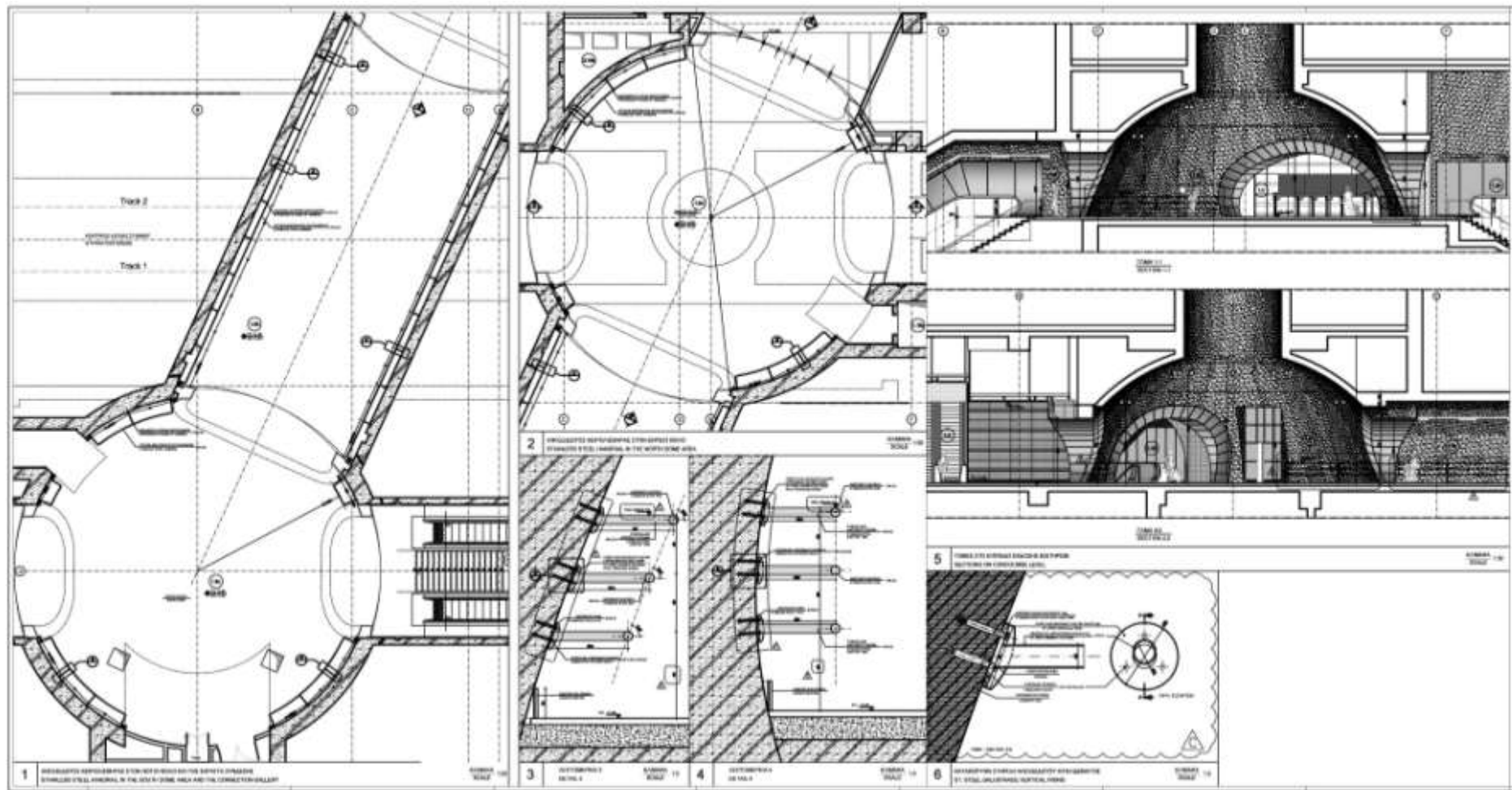


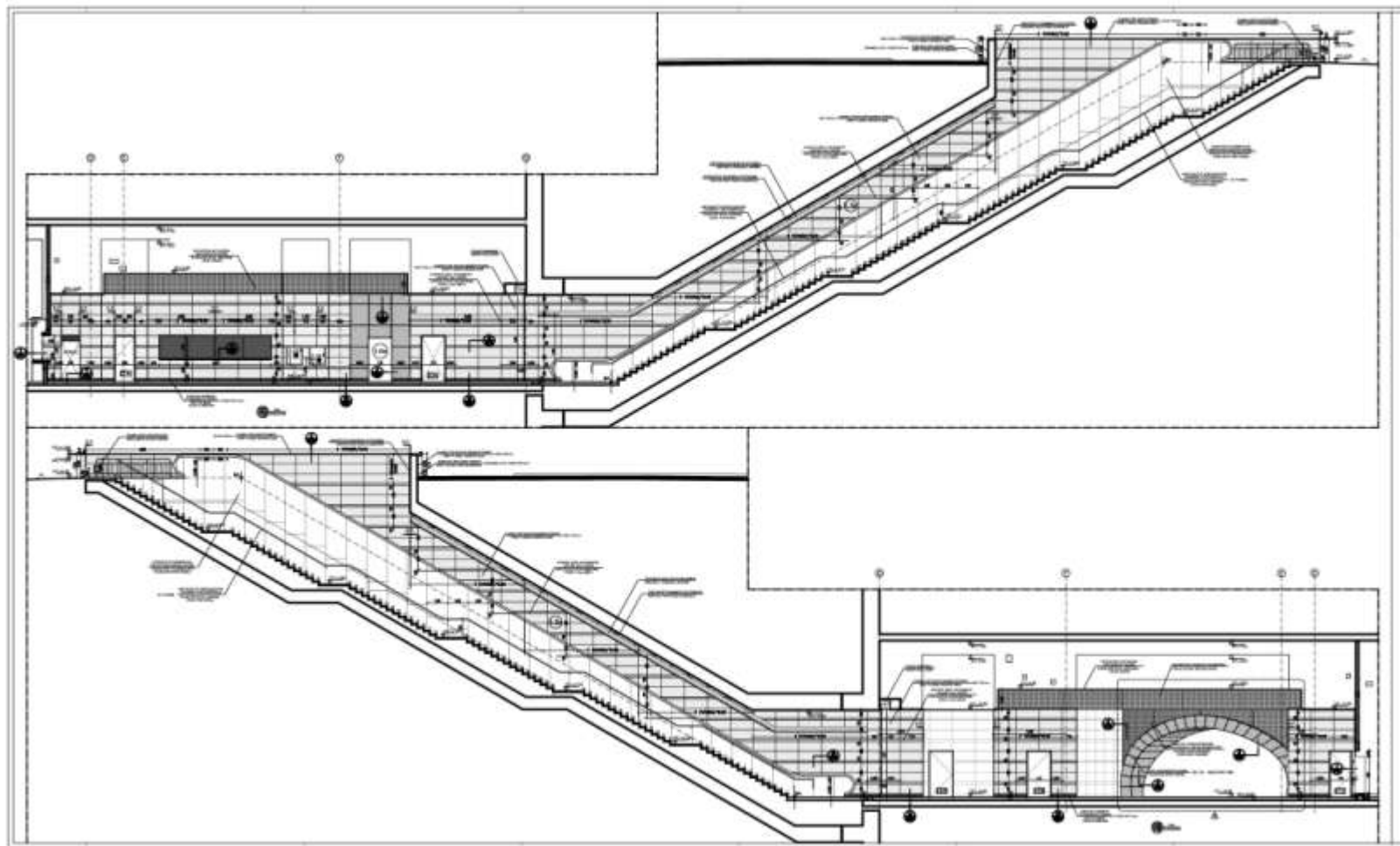




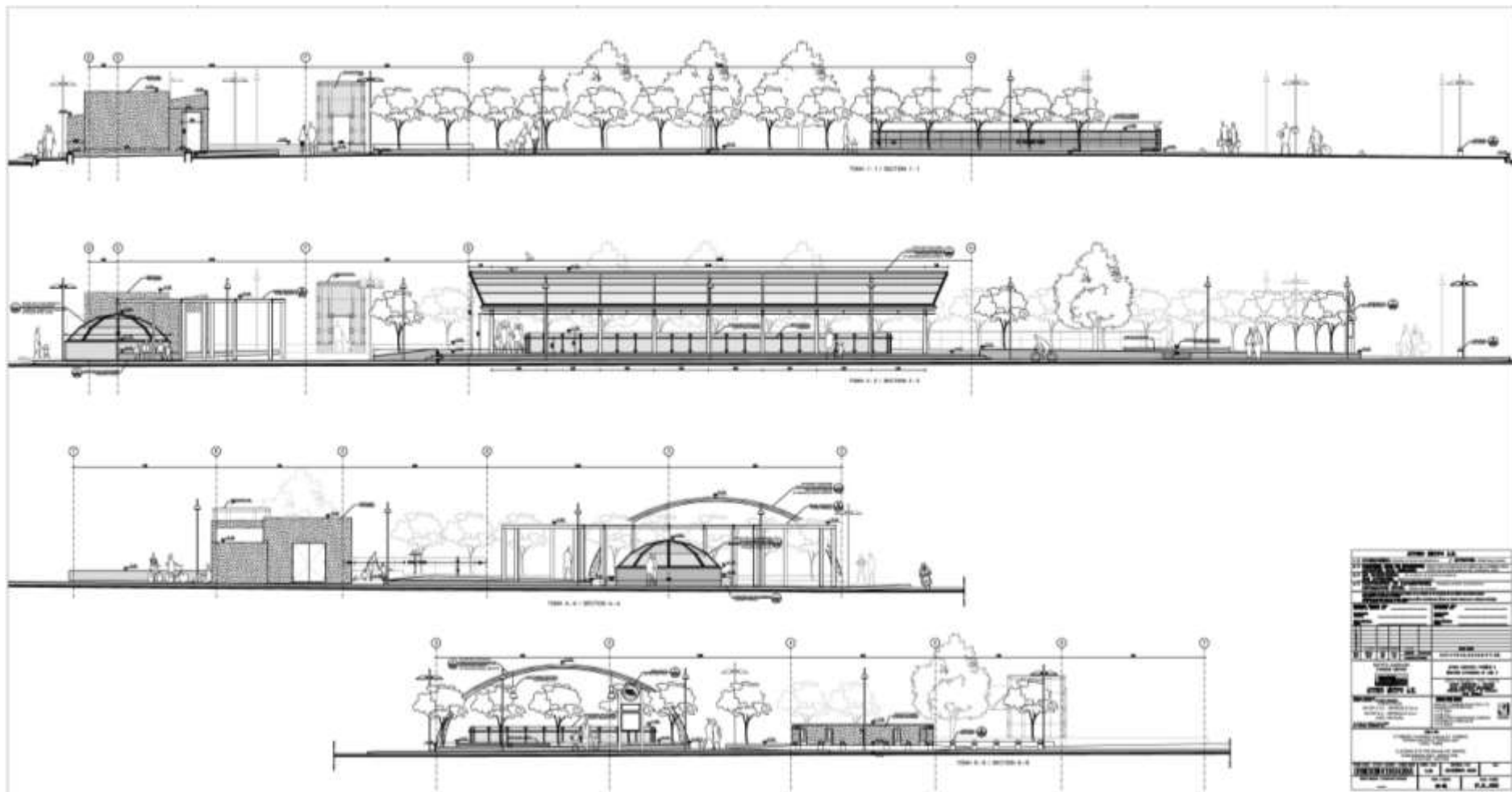
## 4. *PUBLIC SPACE*

ATHENS METRO STATION 'ELEONAS' → 2006-2008













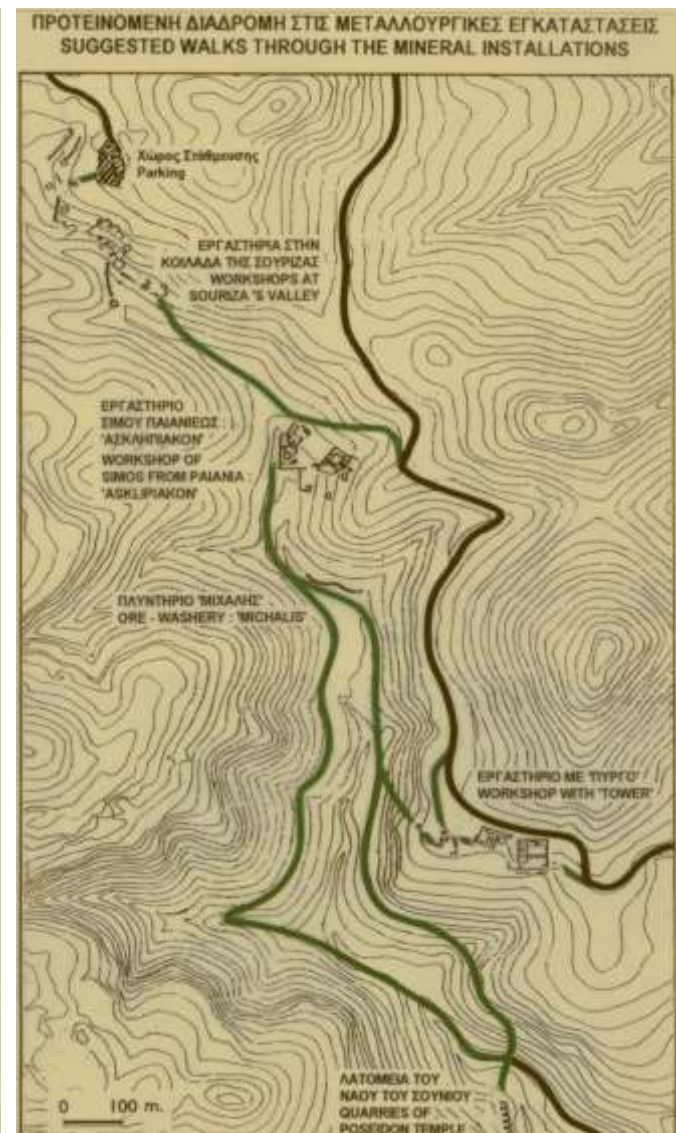
## METRO STATION: ELEONAS



STUDY FOR THE ARCHAEOLOGICAL PARK OF LAVREOTIKI →1998  
LAVRION - ATTICA

EMPLOYER :  
GREEK MINISTRY OF CULTURE  
B' DPTM OF PREHISTORICAN & CLASSICAL MONUMENTS





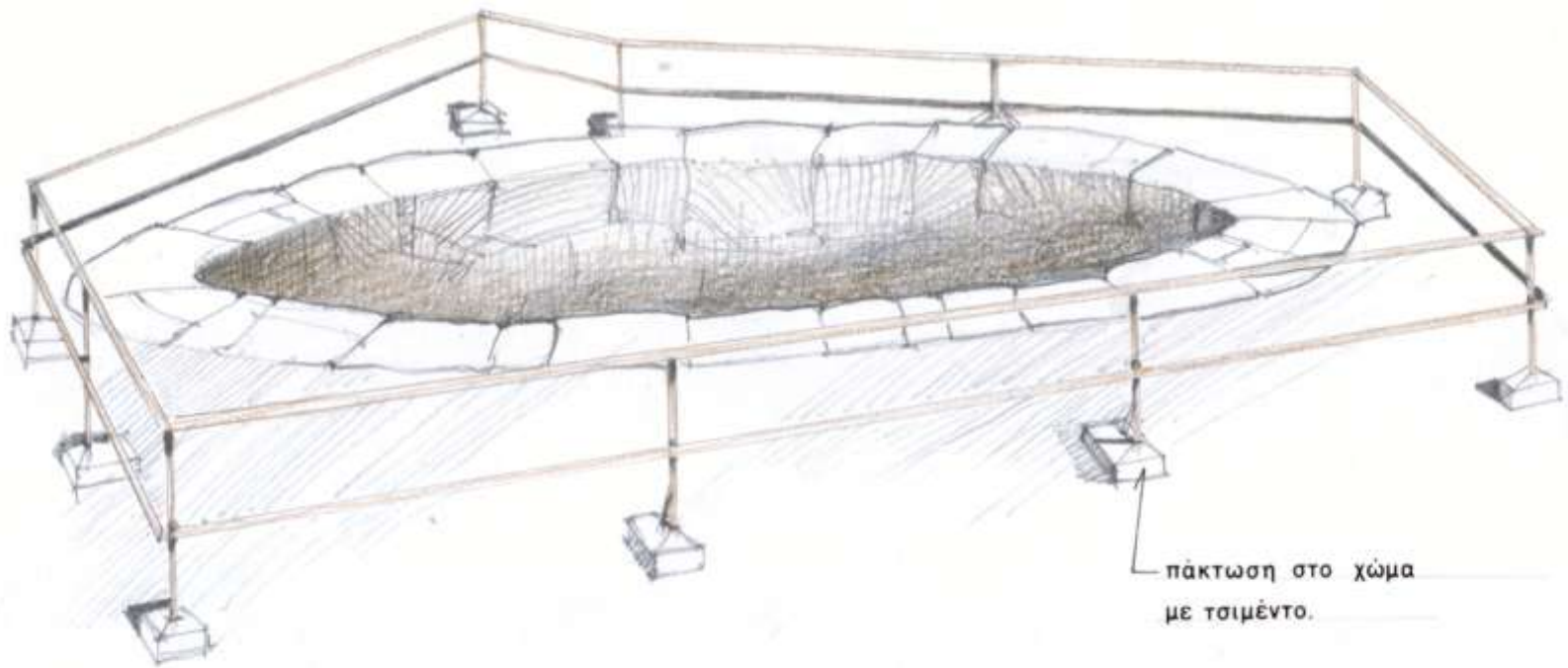








παράδειγμα περιμετρικού στηθαιίου στέρνας πλυντηρίου.



## ΔΙΑΜΟΡΦΩΣΗ ΠΕΡΙΠΑΤΩΝ

## ΛΕΠΤΟΜΕΡΕΙΑ

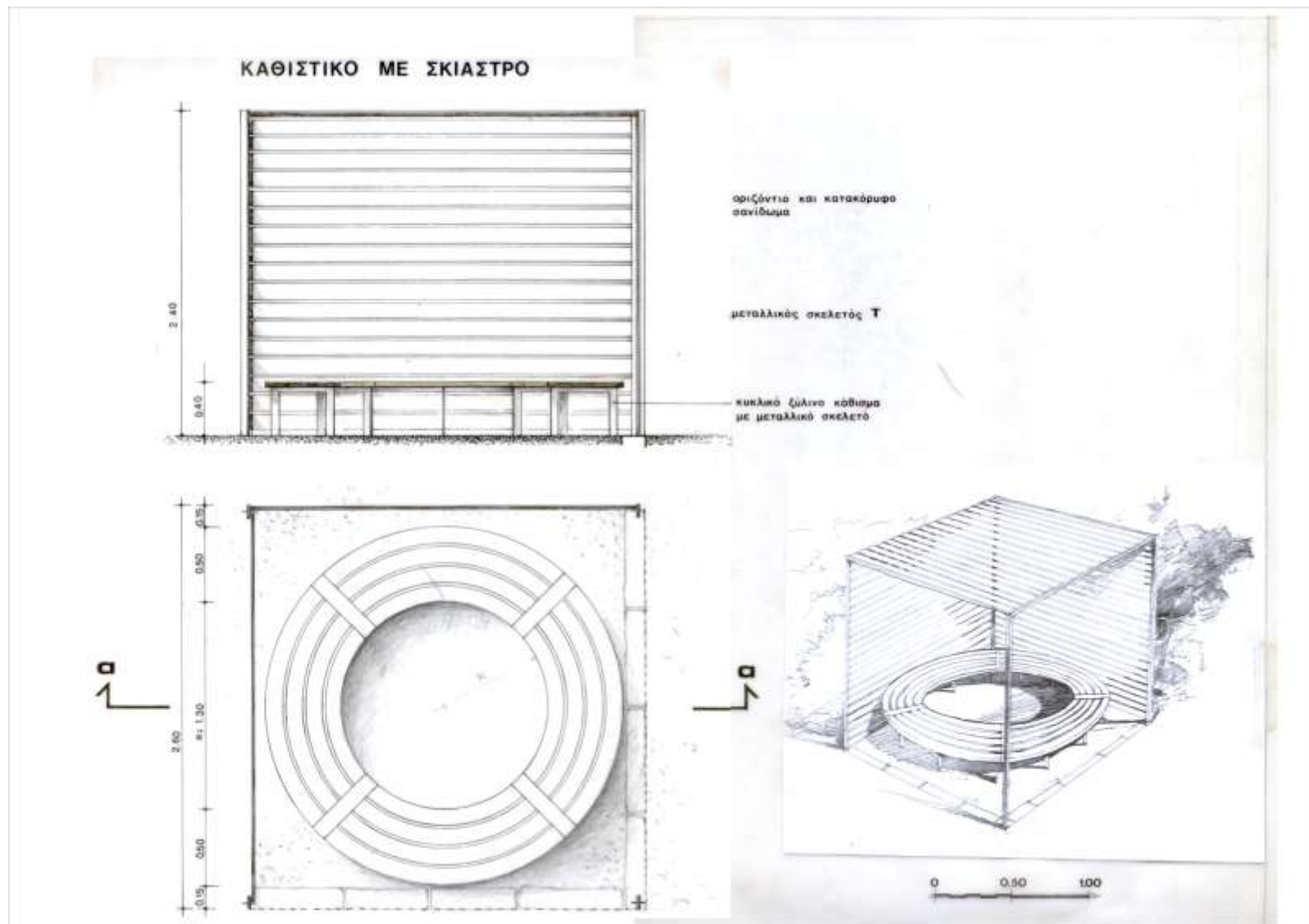
πατημένο χώμα

πέτρα

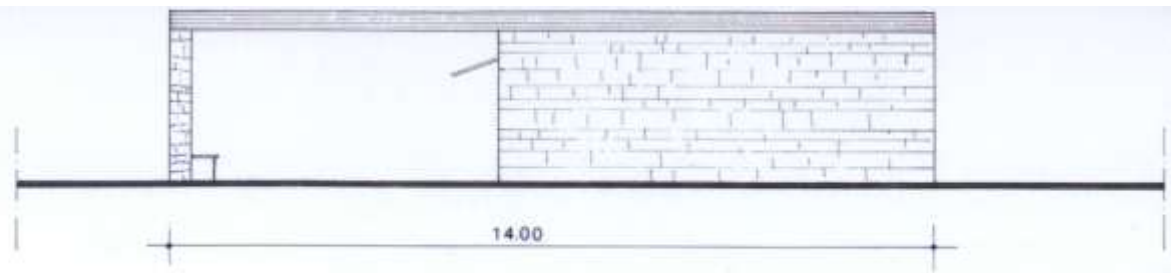
## ΓΕΝΙΚΗ ΑΠΟΨΗ ΤΜΗΜΑΤΟΣ ΠΕΡΙΠΑΤΟΥ



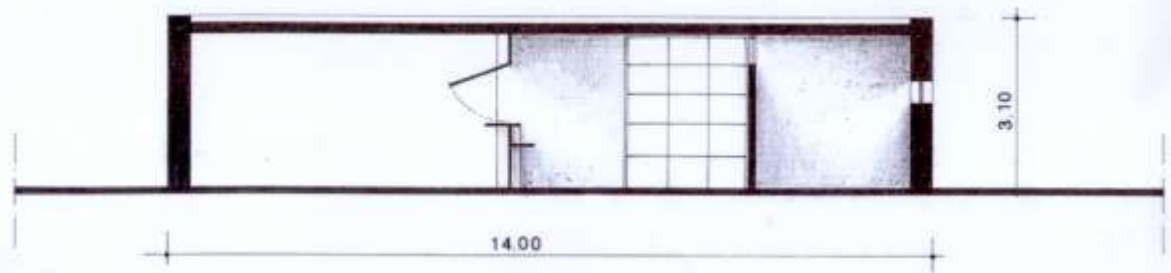




ΟΨΗ

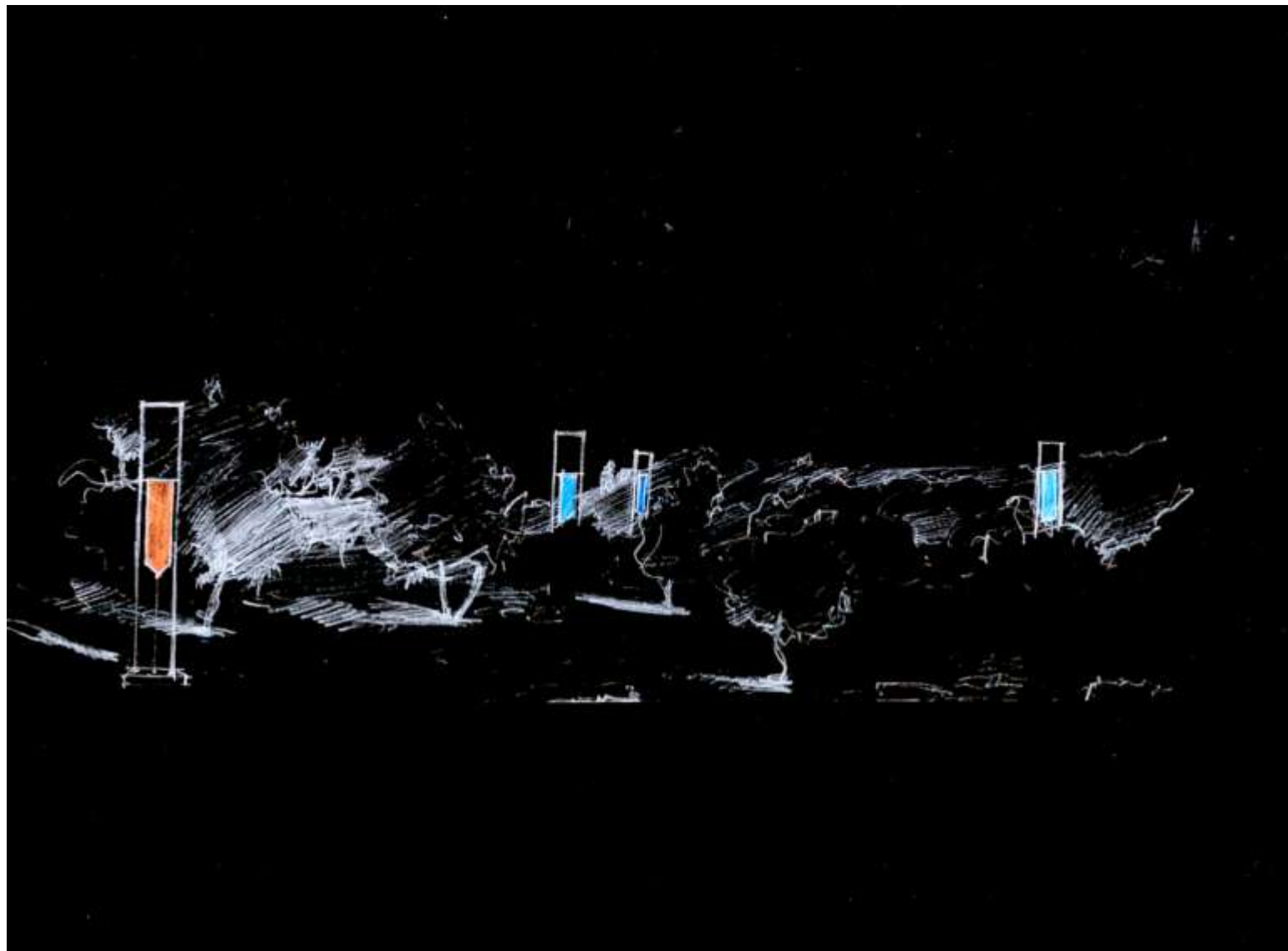


ΤΟΜΗ α-α



ΚΑΤΩΨΗ





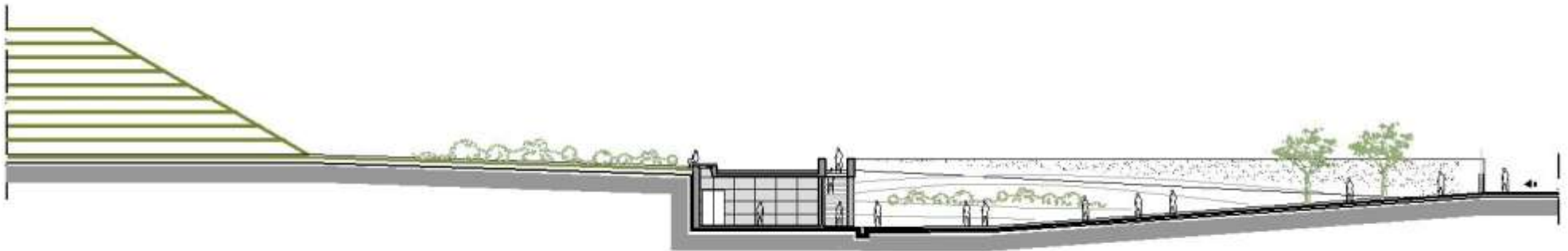
STUDY FOR AN ARCHAEOLOGICAL MUSEUM →2001  
ARCHAEOLOGICAL SITE OF MARATHON TOMBE - ATTICA

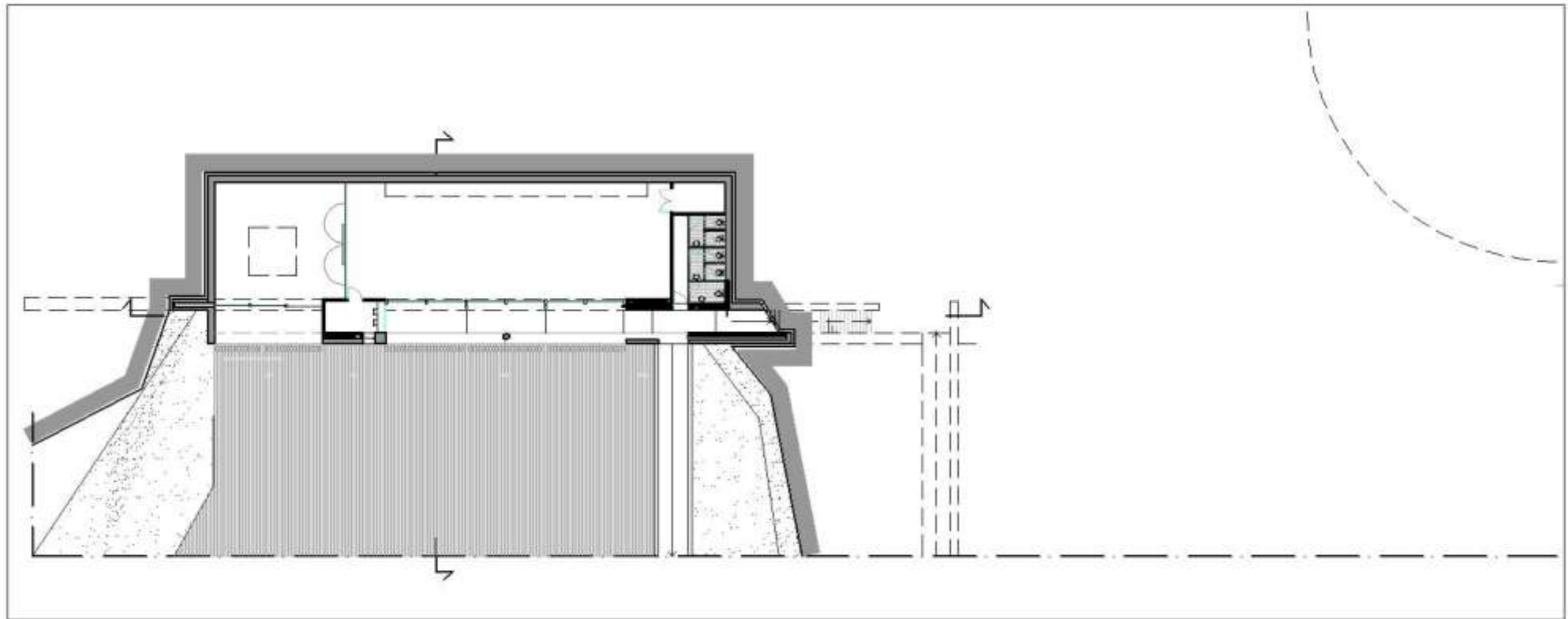
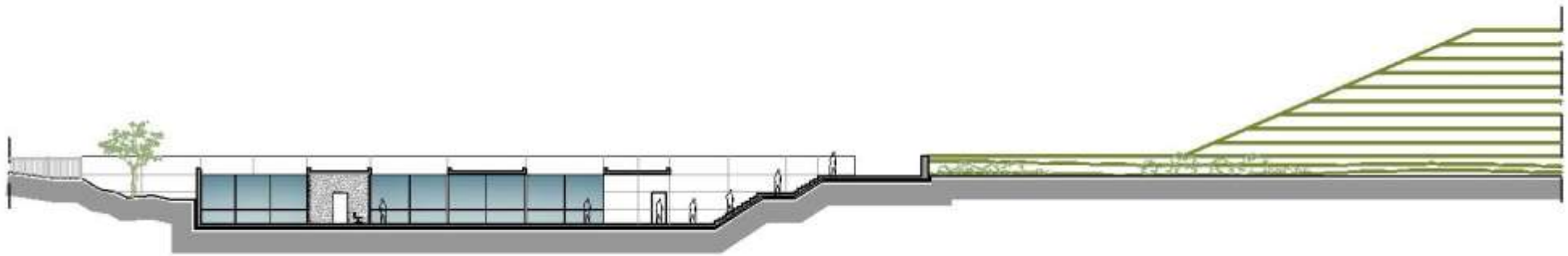
EMPLOYER :  
GREEK MINISTRY OF CULTURE  
B' DPTM OF PREHISTORICAN & CLASSICAL MONUMENTS





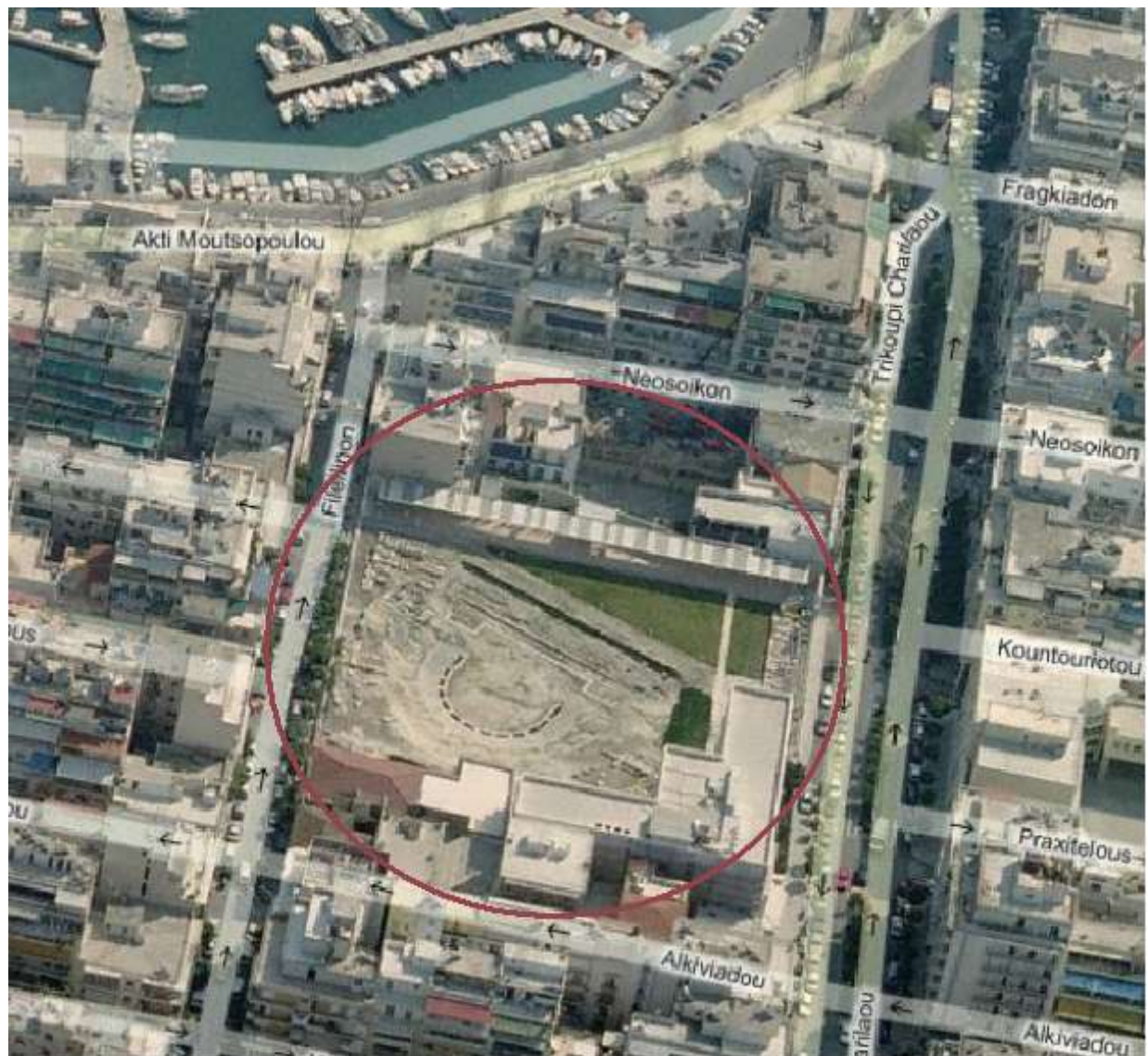


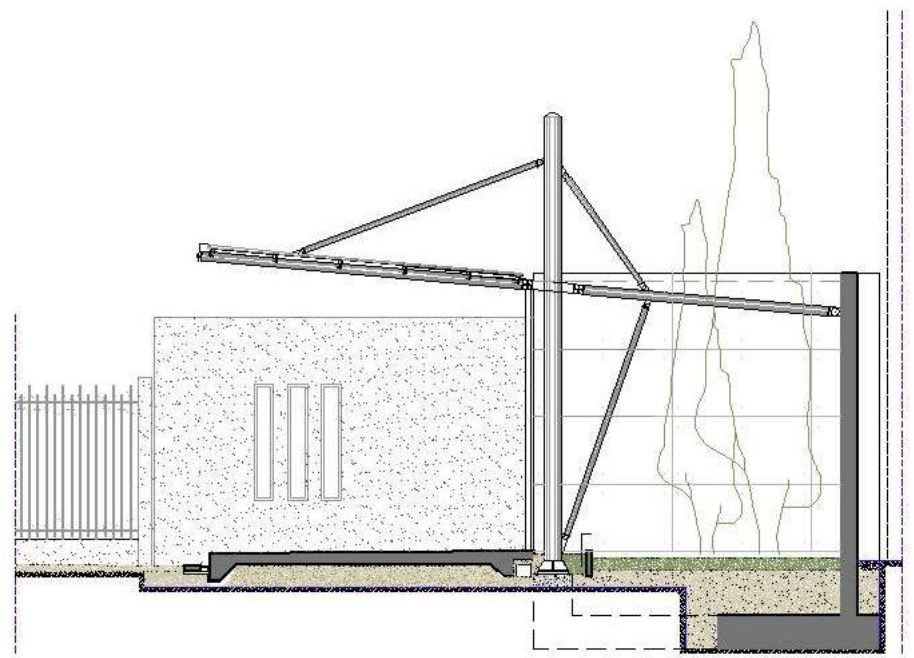
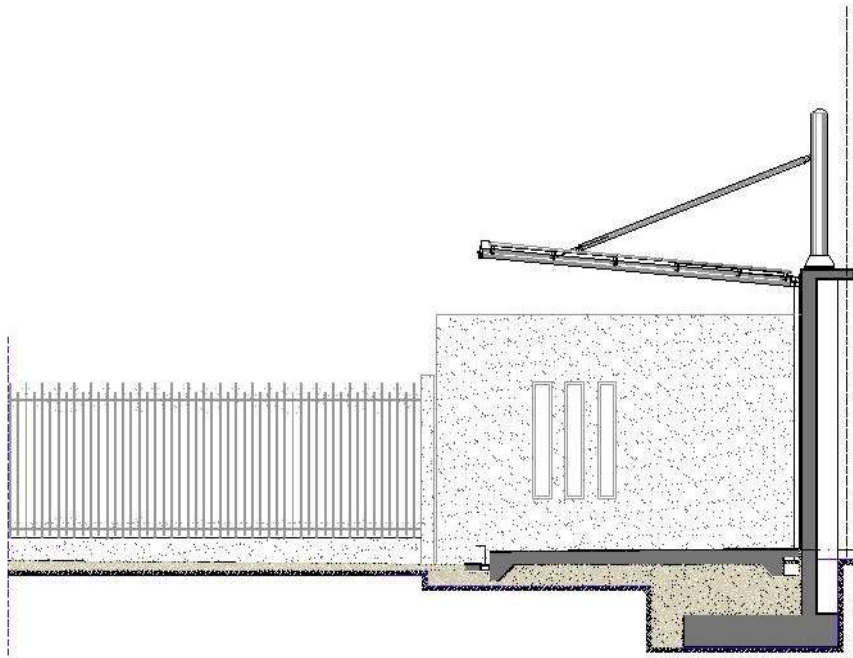




OUTDOOR EXHIBITION AT THE SURROUNDING AREA OF THE HELLENISTIC THEATER OF ZEA →2002  
ARCHAEOLOGICAL MUSEUM OF PIRAEUS - ATTICA

EMPLOYER :  
GREEK MINISTRY OF CULTURE  
B' DPTM OF PREHISTORICAN & CLASSICAL MONUMENTS

















**Eleni Delfino**

Born in Athens, 1964.

She graduated from the School of Architecture of NTUA in 1995.

She is a member of the Technical Chamber of Greece and the Greek Architects Association.

She has been awarded in national and international competitions.

She has been involved in private and public projects, for residential, industry, leisure and archaeological sites.

Her architectural interests focuses on the integration of the building with its physical environment and the relationship may have with its surroundings.

**Panagiotis Kyriakakis**

Born in Kalamata, Greece 1967

He graduated from the School of Architecture of NTUA in 1996.

He is a member of the Technical Chamber of Greece and the Greek Architects Association.

He has received awards in national competitions, his work has been published in Greek journals.

He has been working in large scale private and public projects in Greece including residential buildings, hotels, industry, transportation projects and monuments restoration.

He has great experience in project management and the construction process.

**Domni Zefkili**

Born in Athens, Greece, 1976.

She graduated from the School of Architecture of NTUA in 2001.

She is a member of the Technical Chamber of Greece and The Greek Architects Association.

She has been involved in theatres ,music halls, resort hotel projects, luxury restaurants and houses as well as renovations of buildings of special historic and vernacular interest.

Her main interest focuses upon the interrelation between buildings, people and ideas and the study of space and building as a key institution central to an understanding of how social relations are organized.

**Lydia Mousmouti**

Born in Johannesburg, S. Africa 1976.

She graduated from the School of Architecture of NTUA in 2001.

She is a member of the Technical Chamber of Greece and The Greek Architects Association.

She has been involved in large scale urban projects and resorts, health care facilities, tourism facilities, luxury houses and bulidings of special statue.

Her main design interest is the integration of building structures and in the landscape.

